

WIDCS[®] - 電極絲全智慧動態控制系統註冊標誌
Registration mark of fully intelligent dynamic control system.

精度與細度最領先的中走絲
Leading ahead by precision and fineness.

五軸聯動全智能中走絲線切割機

Five-axis Intelligent Molybdenum Wire Cut EDM



固品機電科技有限公司

GP ELECTRICAL TECHNOLOGY CO.,LTD



<https://www.gp-edm.com>

警告 中走絲線切割系統選購 七大陷阱

- 第一大陷阱---** 只講機台的技術有多麼地先進，不講機台關鍵性的精度指標
 數控機台不同於其他機械產品，沒有精度的機台等於廢鐵一堆、關鍵技術指標是先進技術量化的體現，回避關鍵技術指標、再先進的技術都是唬爛
- 第二大陷阱---** 只講最大加工效率、不講連續切割時間！
 任何切割效率如果不能連續加工24小時以上、加工效率再高也沒有實用價值
- 第三大陷阱---** 只講最低表面粗糙度、不講能連續切割多少面積？
 表面粗糙度再好，在不需要人為干涉的情況下，如果不能連續切割 20,000mm² 以上的話，同樣沒有實用價值，只能算是低階中走絲系統
固品公司指標：Ra ≤ 1.0um / 30,000mm²
- 第四大陷阱---** 只講加工精度、卻從不講連續切割多個零件的穩定性或一致性精度！
 在進行十幾個甚至幾十個相同零件的批量連續加工，或者是連續加工跳步模尺寸的一致性尤為重要；注意! 這裡所講的連續加工是指不允許有操作者人為的檢測和補償鉚絲直徑等操作
固品公司指標：一致性尺寸誤差 ≤ 0.005mm / 30件
- 第五大陷阱---** 只講加工厚度、卻不講上中下位置的縱向尺寸誤差？
 當加工100mm以上的厚度吋上中下位置的尺寸及易產生”橄欖”形誤差
固品公司指標：縱向尺寸誤差 ≤ 0.005mm / 100mm 0.02mm / 200mm
- 第六大陷阱---** 只講30° ~ 60°大錐度切割、卻不講此時能達到的表面粗糙度為多少？
 真正的高端大錐度中走絲線切割機台，當加工60度大錐度吋，表面粗糙度可以達到 Ra ≤ 1.2um、且不使用任何形式的導絲器、眼膜等、且必須同樣實現大面積連續切割、這才更有實用價值
固品公司指標：錐度為60° / 50mm吋、Ra ≤ 1.2um / 3000mm²(不用導絲器)
- 第七大陷阱---** 只講中走絲線切割機台的切割質量、卻從不講對操作人員的依賴！
 中走絲機台的加工質量再好、如果必須依賴操作人員個人的技能才能實現，這樣的中走絲機台只是低端產品
固品公司指標：全智慧化操作

Caution : Seven Things to Caution When Choosing Molybdenum Wire EDM

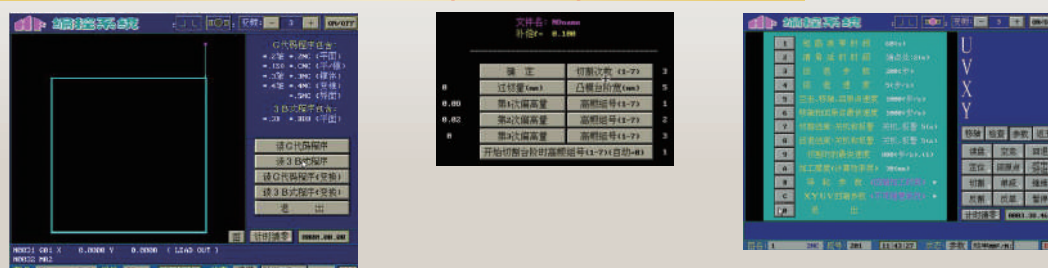
- Caution 1.---** If only advanced the technology is mentioned but nothing about key indexes of precision.
 Molybdenum Wire Cut EDM, compared with other mechanical products, would be useless if without precision. Key technical indicators are the concrete result of advanced technology. Any argument without mentioning them can be “unrealistic.”
- Caution 2. If only maximum working efficiency is mentioned but nothing about continuous cutting time!**
 High working efficiency would be useless if 24-hour continuous cutting cannot be achieved.
- Caution 3. If only best surface roughness is mentioned but nothing about total area cut continuously at one time!**
 No matter how well the surface roughness is achieved, if 20,000mm² unmanned machining cannot be achieved, that is just low-end product.
GP Key Index : Ra ≤ 1.0um / 30,000mm²
- Caution 4. If only cutting accuracy is mentioned but nothing about the consistency and stability of parts in the same batch.**
 It is critical when it comes to continuous batch fabrication for a dozen or dozens of identical parts, plus multi-cavity machining. ‘Continuous’ here is referred to no intervention from operator during the machining process for doing any inspection or offset the electrode wear.
- GP Key Index : Dimensional Error ≤ 0.005mm / 30 pieces**
- Caution 5. – If only cutting thickness is mentioned but nothing about vertical profile tolerance (up-middle-bottom).**
 When cutting thickness over 100mm or more, over-size in the middle (olive-shaped) can be incurred easily.
GP Key Index : Vertical profile tolerance ≤ 0.005mm / 100mm 0.02mm / 200mm
- Caution 6. If only 30° ~ 60° large taper cut is mentioned, but nothing about surface roughness attainable.**
 A high-end large-tapered Molybdenum Wire Cut EDM with practical value should be able to fulfill large area cutting at Ra ≤ 1.2um continuously without using any tooling such as Wire Roller or Guide.
GP Key Index : Ra ≤ 1.2um / 3000mm² at taper 60° / 50mm
- Caution 7. If only machining quality and capacity are mentioned, but nothing about the dependence on operators’ expertise.**
 If the Molybdenum Wire Cut EDM cannot create ideal machining quality and capacity without operators’ expertise, it is somehow low-end product after all.
GP Key Index : Fully intelligent operation

◀ 中走絲專用數控系統 ▶ CNC Control System of Molybdenum Wire Cut EDM

Autocut 多次切割系統 ▶ Autocut Multiple Cutting Function



HF 多次切割系統 ▶ HF Multiple Cutting Function



§ 機台特性【五大超前設計】：Five Advanced Characteristics and Features

- ① 全系列機床構件採標準加工中心機架設計製造、不因承重位移後而使精度產生任何變化(非倒吊結構)

Standard VMC style construction is applied on all models, effectively preventing from any accuracy loss while table is moving with workpiece (not suspension structure design)

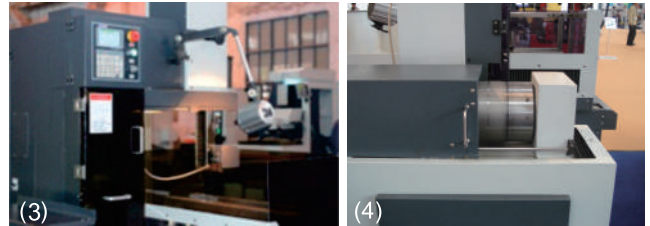
- ② 全系列 XY軸採高精密線軌、採日本 NSK精密靜音軸承、UVZ軸採上銀線軌、機台精度達中國慢走絲國家標準

HQ Linear Guides (XY), NSK high precision bearings and HIWIN Linear Guide (UVZ) are equipped, for approaching the performances of Brass Wire Cut EDM.



- ③ 全系列配備電極絲全智慧動態控制系統【WIDCS】、全過程在電極絲高速運行中高精確高靈敏適時張力控制、【控制精度達到 0.2N / 0.5S】

Fully automated intelligent dynamic system (WIDCS) monitors and maintains wire tension under 0.2N / 0.5S sensitivity that has greatly extended the life of cutting wire.



- ④ 全系列配備電極絲刀庫化控制、伺服機種全部採用日本松下交流伺服

ATC-Simulizing Function (ASF) can specify a certain section of wire bobbin to perform rough or fine cutting, perfectly resolving wear out issue of electrode wire. Servo models are all equipped with Panasonic AC servo.

- ⑤ 全系列配備高速高精度智慧型高頻電源、可依據切割材質、厚度、電流產出最佳切割參數加工

In-house Hyper Frequency Power (HFP) can recall built-in data bank and generate the most optimum cutting data as long as user punches in parameters like : material, thickness and current.



如果無法承諾、實現**6A**核心指標的中走絲那就是中低階的中走絲系統 (不需要導向器、眼膜情況下、**本公司承諾**)

- A ● 連續30,000 mm²大面積切割實現 Ra ≤ 1.0um
- A ● 連續加工30個相同工件第一個與第 30 個的一致性誤差 ≤ 0.005mm
- A ● 100mm 厚度多次切割、上中下的尺寸誤差 ≤ 0.01 mm、而 200mm厚度切割、上中下尺寸誤差 ≤ 0.02mm
- A ● 大錐度切割(GPD機種) 60° / 50mm 厚度時 Ra ≤ 1.2um / 3000mm²
- A ● 電極絲損耗 0.01mm / 100,000 mm² (均達300,000mm²切割面積才需換絲)
- A ● 包含絲筒換向時間切割效率可達160mm² / 每分鐘、電流6A以上

If all 6A core indexes cannot be achieved, then the Molybdenum Wire Cut EDM could be of low-end product.

No need for Roller guides and Wire Guides. **We commit :**

- Continuous 30,000 mm² large area cutting at Ra ≤ 1.0um
- Profile tolerance can be held ≤ 0.005mm for cutting 30 same parts in a row.
- Vertical straightness (top/middle/bottom) of T= 100mm punch ≤ 0.01mm; T= 200mm ≤ 0.02mm, after skim cuts.
- Large taper cutting (GPD model) 60° / T=50mm at Ra ≤ 1.2um / 3000mm²
- Wear of electrode wire 0.01 mm / 100,000 mm² (Only is wire change required for every 300,000mm² cutting area.)
- Average machining speed reaches 160mm² / min to increase daily productivity including wire-bobbin reversal time (current over 6A)



工件材料:SKD11
Workpiece Materials
工件厚度:70
Workpiece thickness
粗糙度 Ra:0.9um
Roughness



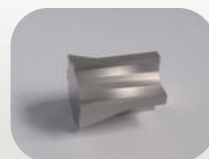
工件材料:SKD11
Workpiece Materials
工件厚度:140/40°切割
Workpiece thickness:140/40° Taper
粗糙度 Ra:1.2um
Roughness



工件材料:SKD11
Workpiece Materials
工件厚度:40
Workpiece thickness
粗糙度 Ra:1.0um
Roughness



工件材料:SKD11
Workpiece Materials
工件厚度:30
Workpiece thickness
粗糙度 Ra:0.9um
Roughness



工件材料:SKD11
Workpiece Materials
工件厚度:50
Workpiece thickness
粗糙度 Ra:1.2um
Roughness



工件材料:SKD11
Workpiece Materials
工件厚度:30
Workpiece thickness
粗糙度 Ra:0.95um
Roughness

§ 八大貼心設計【所有的設計都是來自客戶的需求】

Eight Thoughtful Designs 【Originated from client Requirements】

① 一鍵上絲、智慧上滿絲不需等待

Push one bottom and finish loading wire with least idle time.

② 無需眼膜、所有導輪加裝防脫保護器穿絲容易、直接掛絲不易滑脫

No Wire Guide is required. All Rollers are equipped with Anti-slip Device for easy and firm loading.

③ 一鍵緊絲

(依據絲徑自動恆張力緊絲、免除人為疏失)

Push one bottom to tighten the wire (Tension is automatically adjusted according to wire diameter. Free of man-made error.)

④ 全系列 Z 軸上下位移、不需拆絲

Z-axis can move up and down, so no need for wire unloading.

⑤ 切割全過程有智慧型電極絲張力追蹤系統處理【WIDCS】、保持恆張力切割、不因電極絲延展、損耗、導致精度、速度下降、引起斷絲

The entire process of cutting controlled by WIDCS (Intelligent Wire Tension Tracking Function), so constant tension can be maintained while cutting. No decrease in accuracy, speed or wire break can be incurred by wire elongation and wear-out.

⑥ 依據需求可打開自動刀庫功能可達

0.005mm / 30件 $Ra \leq 1.0\mu m$ (選配)

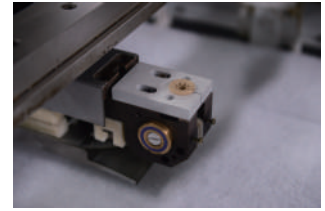
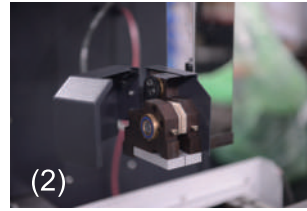
ASF Function can be activated and achieve 0.005mm / 30 pieces $Ra \leq 1.0\mu m$ when high accuracy is required. (Optional equipment)

⑦ 只需輸入切割材質、厚度、切割電流即可產出最佳參數加工

Just enter the cutting material, thickness, cutting current to get the most optimum parameter.

⑧ 配備新型長壽導電塊、壽命為傳統導電塊的 20 倍、步進機種採皮帶傳動 (無齒輪箱造成的異音與齒輪磨損誤差)

Equipped with a new long-life Power Contact that can stand 20 times longer lifespan compared to traditional type. Stepper motor belt drive system work quietly and is without the inaccuracy from the gearboxes.)



【加裝B軸】



松下交流伺服馬達組裝圖
Panasonic AC servo Motor Assembly



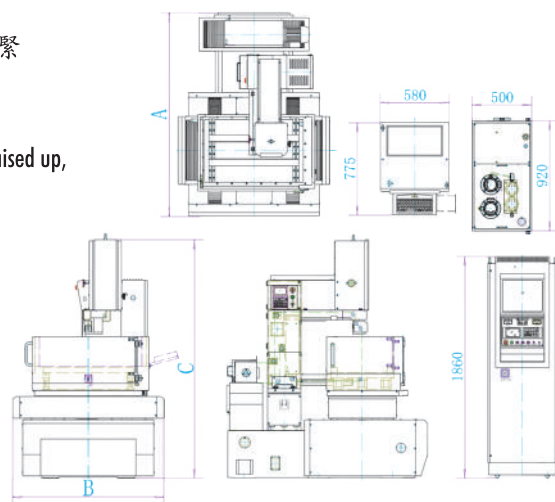
步進馬達組裝圖
Stepper Motor Assembly



GPC 高性價比系列 GPC High Cost and Performance Series

- X、Y軸及張力為全交流伺服
- Z軸為上銀導軌結構、全不銹鋼防護、可2秒鐘快速手動升降操作及鎖緊
- GPC系列是最經濟的全智能C型結構中走絲產品
- X、Y and WIDCS is managed by AC Servo system.
- HIWIN Linear Guide and stainless protection cover are adopted for Z axis structure, which can be raised up, lowered down and locked within 2 seconds.
- GPC Series is the most economical intelligent C-type structure Molybdenum Wire Cut EDM

GPC435



GPC435 Floor Layout

GPC系列置布局尺寸表

機型 SERIES NO.	尺寸 size	A	B	C
GPC435		1640	1050	2000
GPC540		1680	1280	2000
GPC635		1820	1500	2000

CNC WIRE-CUT E.D.M. MOLYBDENUM WIRES : ◆ MACHINE UNIT 機械尺寸 ◆

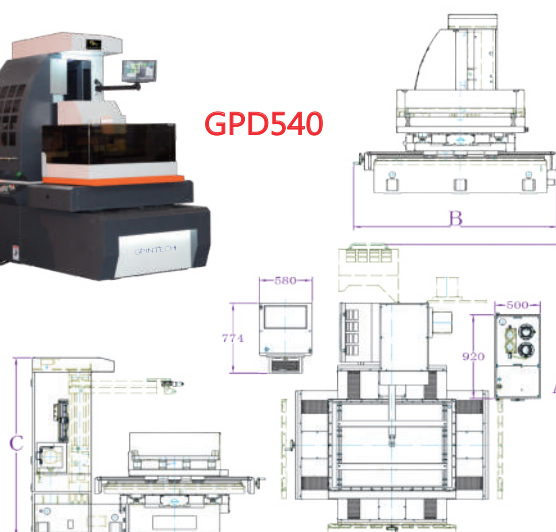
規格 SPECIFICATIONS		SERIES NO. 型別	GPC435	GPC540	GPC635
Work tank (W×D×H) 工作水槽	mm		840×600×450	980×620×450	1100×700×450
Work table size (X×Y) 工作台面積	mm		840×620	980×620	1100×700
Work table travel (X×Y) 工作台行程	mm		400×350	500×400	630×500
Max. work-piece thickness 最大加工件厚度	mm		280(可選配400) (*opt to 400)	280(可選配400) (*opt to 400)	280(可選配400) (*opt to 400)
最大切割斜度 (Degree/mm)	°/mm		±3° / 100	±3° / 100	±3° / 100
UV axis travel UV軸行程	mm		±25	±25	±25
Max. work-piece size (D×W×H) 最大加工件尺寸	mm		350×400×250	400×500×250	500×630×250
Max. work-piece weight 最大加工件重量	kgs		350	400	800
The wire bobbin travel 最大滾絲軸行程	mm		250	250	250
Dia. of molybdenum wire 電極鉬絲直徑	mm		φ 0.1 ~ φ 0.20	φ 0.1 ~ φ 0.20	φ 0.1 ~ φ 0.20
External dimensions (W×D×H) 外型尺寸	mm		1640×1050×2000	1680×1280×2000	1840×1500×2000
Packing dimensions (W×D×H) 包裝箱外形尺寸	mm		1900×1300×2400	1950×1500×2400	2120×1760×2550
Net weight 淨重	kgs		1580	1700	1800

GPD大錐度系列 GPD Large Taper Series

- 智慧型電極絲張力追蹤系統採交流伺服系統處理
- 無需導絲器、眼膜實現 30000mm²大面積 60°大錐度連續多次切割加工 Ra≤1.2um
- 30°斜頂孔 200mm 大厚度多次切割、上中下尺寸精度 0.02mm
- 60°八方橫向對邊尺寸誤差 ≤ 0.03mm
- WIDCS is managed by AC Servo system.
- Without Roller guides and Wire Guides, Ra≤1.2um is attainable for continuous 30000 mm² machining area at 60° taper by skim cuts.
- By skim cuts, 0.02mm profile accuracy can be reached for 30° oblique cavity on a 200mm thickness part
- Profile tolerance of octagonal punch (side to side, every 60°) ≤ 0.03mm.



GPD540



GPD model series Floor Layout



GPD863

GPD系列置布局尺寸表

機型 SERIES NO.	尺寸 size	A	B	C
GPD540		2381	1420	1755
GPD635		2584	1650	1971
GPD863		2848	2050	1971
GPD1080		3222	2120	1971

CNC WIRE-CUT E.D.M. MOLYBDENUM WIRES : ◆ MACHINE UNIT 機械尺寸 ◆

規格 SPECIFICATIONS		SERIES NO. 型別	GPD540	GPD635	GPD863	GPD1080
Work tank (W×D×H) 工作水槽	mm		910×600×400	1010×680×400	1230×820×400	1410×1010×400
Work table size (X×Y) 工作台面積	mm		910×600	1010×680	1220×795	1410×1010
Work table travel (X×Y) 工作台行程	mm		500×400	630×500	800×630	1000×800
Max. work-piece thickness 最大加工件厚度(30°以上)	mm		300	400	400	400
最大切割斜度 (Degree/mm)	°/mm		±30°/40	±30°/40	±30°/40	±30°/40
Max. work-piece size (D×W×H) 最大加工件尺寸	mm		400×500×300	500×630×400	630×800×400	800×1000×400
Max. work-piece weight 最大加工件重量	kgs		400	800	1200	2000
The wire bobbin travel 最大滾絲軸行程	mm		250	250	250	250
Dia. of molybdenum wire 電極鉬絲直徑	mm		φ 0.1 ~ φ 0.20	φ 0.1 ~ φ 0.20	φ 0.1 ~ φ 0.20	φ 0.1 ~ φ 0.20
External dimensions (W×D×H) 外型尺寸	mm		1680×1300×1760	1840×1500×1980	2100×1750×1980	2660×2150×1980
Packing dimensions (W×D×H) 包裝箱外形尺寸	mm		1950×1500×2300	2120×1760×2550	2400×1980×2550	2780×2280×2550
Net weight 淨重	kgs		1900	2900	3900	4900

GPE 精密系列 GPE Precision Series

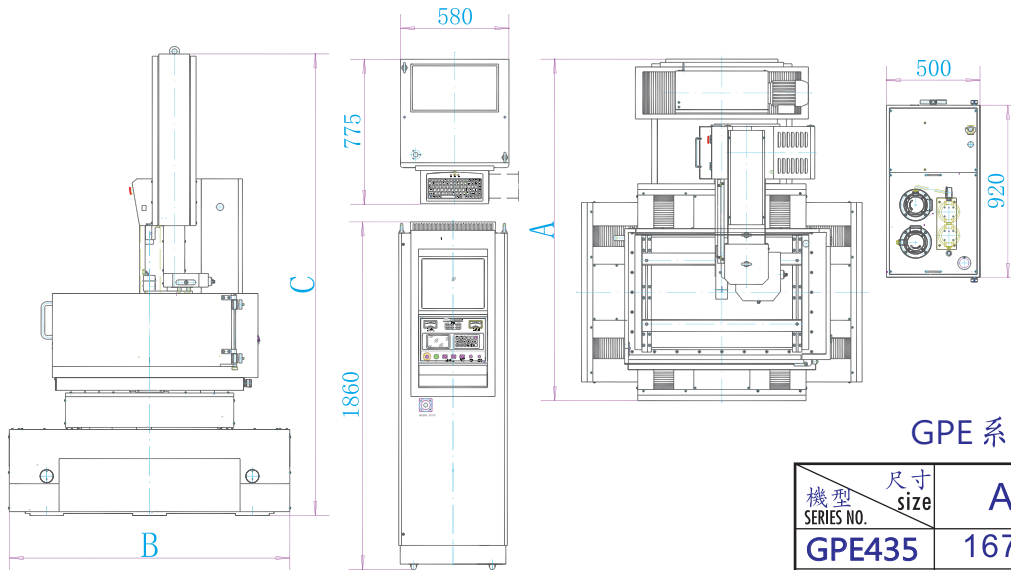
GPE435



- 智慧型電極絲張力追蹤系統採交流伺服系統處理
- 注油裝置採自動定時注油
- Z軸採用輕質高強度航空鑄鋁合金材料
- WIDCS is managed by AC Servo system.
- Automatic Oil Injector adopted.
- Z-axis using aerospace grade high-strength, light-weight aluminum alloy.



GPE1412為全世界最大型中走絲、廣泛用於汽車行業的大型模具、車燈模具等
 GPE1412 is the world's largest model and widely used in the manufacturing industry of automotive, large molds, lamp molds and so on



GPE Floor Layout

GPE 系列置布局尺寸表

機型 SERIES NO.	尺寸 size	A	B	C
GPE435		1670	1050	2480
GPE540		1710	1280	2480
GPE635		1830	1500	2480
GPE863		2100	1720	2850
GPE1080		2450	2120	2850

CNC WIRE-CUT E.D.M. MOLYBDENUM WIRES : ◆ MACHINE UNIT 機械尺寸 ◆

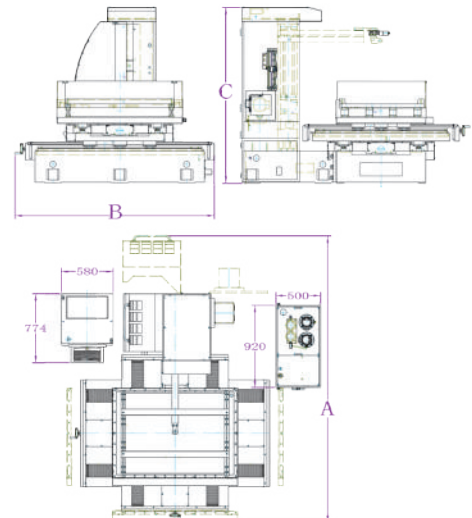
規 格 SPECIFICATIONS		SERIES NO. 型 別	GPE435	GPE540	GPE635	GPE863	GPE1080	GPE1210 超大機 (Super-sized)	GPE1412 超大機 (Super-sized)
Work tank (W×D×H) 工作水槽	mm		840×600×450	980×620×450	1100×700×450	1310×840×450	1500×1030×450	2050×1225×650	2250×1400×650
Work table size (X×Y) 工作台面積	mm		840×600	980×620	1100×700	1310×840	1500×1030	2050×1225	2250×1400
Work table travel (X×Y) 工作台行程	mm		400×350	500×400	630×500	800×630	1000×800	1200×1000	1400×1200
Max. work-piece thickness 最大加工件厚度	mm		400	400	400 (可選配加高至600) (*opt to 600)	600	600	600	600
最大切割斜度 (Degree/mm)	° / mm		±3° / 100	±3° / 100	±3° / 100	±3° / 100	±3° / 100	±3° / 100	±3° / 100
UV axis travel UV軸行程	mm		±25	±25	±25	±25	±25	±25	±25
Max. work-piece size (D×W×H) 最大加工件尺寸	mm		350×400×400	400×500×400	500×630×400	630×800×600	800×1000×600	1000×1200×600	1200×1400×600
Max. work-piece weight 最大加工件重量	kgs		350	400	800	1200	2000	5000	6000
The wire bobbin travel 最大滾絲軸行程	mm		250	250	250	250	250	1000×1200	1200×1400
Dia. of molybdenum wire 電極鉬絲直徑	mm		φ 0.1 ~ φ 0.20	φ 0.1 ~ φ 0.20	φ 0.1 ~ φ 0.20	φ 0.1 ~ φ 0.20	φ 0.1 ~ φ 0.20	φ 0.1 ~ φ 0.20	φ 0.1 ~ φ 0.20
External dimensions (W×D×H) 外型尺寸	mm		1670×1050×2480	1710×1280×2480	1830×1500×2480	2100×1730×2850	2450×2120×2850	3240×2800×3150	3540×3120×3150
Packing dimensions (W×D×H) 包裝箱外形尺寸	mm		1900×1300×2340	1950×1500×2400	2120×1760×2530	2400×1980×2530	2780×2280×2550	主機 : (Master) : 3000×1500×1940 副機 : (Slave) : 2900×1440×2930	主機 : (Master) : 3300×1660×1940 副機 : (Slave) : 3100×1440×2930
Net weight 淨重	kgs		1400	1710	2400	3100	4000	7500	9500

GPF 標準型系列 GPF Standard Series

- 線架採音叉式架構
- Tuning-fork Structure



GPF540



GPF Series Floor Layout

GPF 系列置布局尺寸表

機型 SERIES NO.	尺寸 size	A	B	C
GPF435		2351	1190	1755
GPF540		2381	1420	1755
GPF635		2584	1650	1971
GPF863		2848	2050	1971
GPF1080		3222	2120	1971



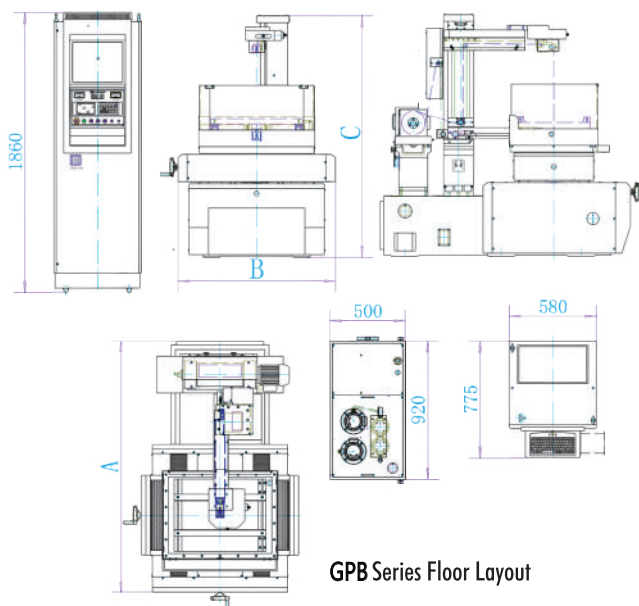
CNC WIRE-CUT E.D.M. MOLYBDENUM WIRES : ◆ MACHINE UNIT 機械尺寸 ◆

規格 SPECIFICATIONS		SERIES NO. 型別	GPF435	GPF540	GPF635	GPF863	GPF1080
Work tank (W×D×H) 工作水槽	mm		770×590×405	910×600×400	1010×680×400	1230×820×400	1410×1010×400
Work table size (X×Y) 工作台面積	mm		770×590	910×600	1010×680	1230×820	1410×1010
Work table travel (X×Y) 工作台行程	mm		400×350	500×400	630×500	800×630	1000×800
Max. work-piece thickness 最大加工件厚度	mm		400	400	600 (可選配 加高至1000) (*opt to 1000)	600 (可選配 加高至1000) (*opt to 1000)	600 (可選配 加高至1000) (*opt to 1000)
最大切割斜度 (Degree/mm)	° / mm		±3° / 100	±3° / 100	±3° / 100	±3° / 100	±3° / 100
UV axis travel UV軸行程	mm		±25	±25	±25	±25	±25
Max. work-piece size (D×W×H) 最大加工件尺寸	mm		350×400×400	400×500×400	500×630×600	630×800×600	800×1000×600
Max. work-piece weight 最大加工件重量	kgs		350	400	800	1200	2000
The wire bobbin travel 最大滾絲軸行程	mm		250	250	250	250	250
Dia. of molybdenum wire 電極鉬絲直徑	mm		φ 0.1 ~ φ 0.20	φ 0.1 ~ φ 0.20	φ 0.1 ~ φ 0.20	φ 0.1 ~ φ 0.20	φ 0.1 ~ φ 0.20
External dimensions (W×D×H) 外型尺寸	mm		1640×1050×1760	1680×1300×1760	1840×1500×1980	2100×1750×1980	2660×2150×1980
Packing dimensions (W×D×H) 包裝箱外形尺寸	mm		1900×1300×2100	1950×1500×2100	2120×1760×2350	2400×1980×2350	2780×2280×2400
Net weight 淨重	kgs		1300	1600	2345	3100	4000

GPB經濟型系列 GPB Economy Series

- 無環保罩設計 ● No environmental protection cover design
- UV軸為傳統滑軌 ● UV axis sit on traditional rails
- 為高端低價產品 ● High-end low-cost products

GPB540



GPB Series Floor Layout

GPB 系列置布局尺寸表

機型 SERIES NO.	尺寸 Size	A	B	C
GPB435		1670	1050	1620
GPB540		1710	1280	1620



CNC WIRE-CUT E.D.M. MOLYBDENUM WIRES : ◆ MACHINE UNIT 機械尺寸 ◆

規格 SPECIFICATIONS		SERIES NO. 型別	GPB435	GPB540	GPB635	GPB863	GPB1080
Work tank (W×D×H) 工作水槽	mm		770×590×400	910×600×400	1010×680×400	1230×820×400	1410×1010×400
Work table size (X×Y) 工作台面積	mm		770×590	910×600	1010×680	1230×820	1410×1010
Work table travel (X×Y) 工作台行程	mm		400×350	500×400	630×500	800×630	1000×800
Max. work-piece thickness 最大加工件厚度	mm		400	400	600 (可選配 加高至1000) (*opt to 1000)	600 (可選配 加高至1000) (*opt to 1000)	600 (可選配 加高至1000) (*opt to 1000)
最大切割斜度 (Degree/mm)	°/mm		±3° / 100	±3° / 100	±3° / 100	±3° / 100	±3° / 100
UV axis travel UV軸行程	mm		±25	±25	±25	±25	±25
Max. work-piece size (D×W×H) 最大加工件尺寸	mm		350×400×400	400×500×400	500×630×600	630×800×600	800×1000×600
Max. work-piece weight 最大加工件重量	kgs		350	400	800	1200	2000
The wire bobbin travel 最大滾絲軸行程	mm		250	250	250	250	250
Dia. of molybdenum wire 電極鉬絲直徑	mm		φ 0.1 ~ φ 0.20	φ 0.1 ~ φ 0.20	φ 0.1 ~ φ 0.20	φ 0.1 ~ φ 0.20	φ 0.1 ~ φ 0.20
External dimensions (W×D×H) 外型尺寸	mm		1670×1050×1620	1710×1280×1620	1840×1500×1980	100×1750×1980	2660×2150×1980
Packing dimensions (W×D×H) 包裝箱外形尺寸	mm		1900×1300×2000	1950×1500×2000	2120×1760×2170	2380×1980×2340	2760×2280×2360
Net weight 淨重	kgs		1445	1710	2040	3100	4000

◆ DIELECTRIC FLUID UNIT 水箱

加工液容量 Capacity of dielectric fluid	L	100
水箱外型尺寸：Size of water tank outside (W×D×H)	mm (inch)	970×500×780

◆ 電控箱規格 Gelectric cabinet specifications

主機Host	工業PC機 industrial pc	控制軸數 control axes number	4軸聯動 4 axis linkage
編控軟體 Editing software	HF(Autocut)	最小指令單位 Min. command unit	1 μm
繪圖系統 drawing system	自帶 (可讀入DXF格式圖形)	最大指令值 Max. command unit	10M
存儲方式storage method	工業DOM盤、USB Industrial dom disk USB	輸出代碼 output code	3B、ISO
顯示方式 display method	17吋液晶 17 inched LCD	最大加工電流 Max.machining current	7A
輸入方式 input method	鍵盤、USB、聯網 keyboard USB networking	脈衝寬度 pulse bandwith	2—62us
記憶體 memory	512M	高頻波形 high frequency waveform	矩形、分組rectangle grouping
顯示文字 show text	中文、英文 Chinese English	高頻工作電壓 high frequency voltage	50—100V (多檔調節)
插補功能 interpolation function	直線、圓弧 straight line arc	外型尺寸 dimensions	580×775×1860
尺寸制式 size format	公制、英制 metric units Imperial units	包裝箱尺寸 packing size	740×780×2040

∞ 標準配備 ∞ Standard equipment

1.	防水主導輪組件 Waterproof Main Roller Assembly	2套(sets)
2.	電極絲刀庫化系統 ATC-Simulizing Function (ASF)	1套(set)
3.	張力控制斷絲保護功能 Anti-wire-break system	1套(set)
4.	乳化膏 emulsifying ointment	2KG
5.	強力磁鐵 Power Magnet	1套(set)
6.	智能參數資料庫系統 Intelligent Cutting Data Base	1套(set)
7.	HF編控一體化系統 HF programming system	1套(set)
8.	XY軸光柵數顯功能 XY Optical Scale	1套(set)
9.	錐度切割裝置 Taper cutting Device	1套(set)
10.	Z軸手動便捷升降裝置 Quick Z Axis up/down device	1套(set)

11.	集中潤滑系統 Centralized lubrication System	1套(set)
12.	多級過濾雙泵大容量水箱 Multi-stage filter double pump large capacity water tank	1套(set)
13.	主導輪便捷掛絲裝置 Guide Roller set for loading wire	1套(set)
14.	落地式鍍金護罩組 Drop-down metal shield	1套(set)
15.	工業級IPC主機電腦及DOM盤 Industrial IPC Hosts and DOM Disk	1套(set)
16.	USB、RS232、網路介面 USB, RS232, network interface	1套(set)
17.	垂直校絲檢具 Vertical Alignment Jig (1 set)	1套(set)
18.	導輪拆裝工具組 Tool kit for Guide Roller	1套(set)
19.	工件夾具組 Clamp Kit Set	1套(set)
20.	0.18電極絲 0.18mm electrode Wire	1卷(volume)

∞ 標準特殊配備 ∞ Standard Special Equipment

1.	WIDCS電極絲智慧動態控制系統 Fully automated intelligent dynamic system (WIDCS)	1套(set)
2.	自動上絲、緊絲功能 Auto wire loading & tightening	1套(set)
3.	絲臂升降不用拆電極絲能力 Free wire unloading function	1套(set)

∞ 選購配備 ∞ Optional equipment

1.	鋼鋁轉換裝置 Steel Aluminum Conversion Device
2.	XY軸日本松下交流伺服驅動 XY axis Panasonic AC Servo Drive
3.	濃度計 Concentration meter
4.	長壽高效型切削液 10L/桶(barrel) Long-life high efficiency cutting fluid



固品機電科技有限公司

GP ELECTRICAL TECHNOLOGY CO.,LTD

TEL : +886-4-25691149 FAX : +886-4-25666439

台中市大雅區前村東路16巷22弄36號

No.32,Aly.22 Ln.16,Qiancun E.RD., Daya Dist., Taichung City 42852 Taiwan

統一編號: 54739716

e-mail: gptech.edm@gmail.com

https://www.GP-EDM.com

經銷商 Dealer